



**Umesh Loona**  
(+267) 71 375 600  
umesh@apexproperties.co.bw

Contact Head Office Gaborone

**+267 397 3333**

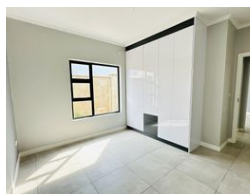
Plot 14400 & 14401,  
New Lobatse Road,  
OLD CA Sales Complex,  
Gaborone,  
Botswana

NEW



SOLE MANDATE

Web Ref RL3819



**P 14,000 pm**

**Lease Period** 24 months  
**Annual Escalation** -

**Availability** Immediately

**Deposit** -

3 2 1

### 3 Bedroom House To Let in Sesha Mews

3 bedroom house to let in Sesha Mews, Kgale, Gaborone, Botswana.

This newly built property is located in a new, secure and gated estate known as Sesha Mews in the heart of Kgale.

The property has an open plan living room, dining, kitchen, patio, master's ensuite and much more

This estate has 24-hour security with strict access. The estate also has a playground and an open gym. The road within the estate is tarmac and marked.

Rental is P 12,500 and levies are P 1,500. Making it P 14,000 a month in total.

Available now, call to book a viewing.

### Features

#### Interior

Bedrooms	3
Bathrooms	2
Kitchens	1
Recep. Rooms	2
Furnished	No

#### Exterior

Garages	1
Security	Yes
Pool	No