



Umesh Loona
(+267) 71 375 600
umesh@apexproperties.co.bw

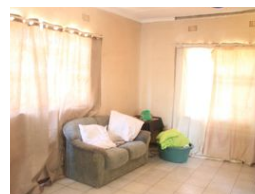
Contact Head Office Gaborone

+267 397 3333

Plot 14400 & 14401,
New Lobatse Road,
OLD CA Sales Complex,
Gaborone,
Botswana



Web Ref RL3256



P 750,000

🛏 3 🛁 1

Monthly Bond Repayment P 7,614.22

Calculated over 20 years at 10.75% with no deposit.

Transfer Costs P 25,898.00 **Bond Costs** P 19,565.00

These calculations are only a guide. Please ask your conveyancer for exact calculations.

3 Bedroom House For Sale in Gaborone

3 BEDROOM PROPERTY FOR SALE IN BOATLE, TAUNG

Located 25km from Gaborone in the peaceful community of Boatle, this property is in a prime location for clients who seek to escape the capital city of Gaborone, but easier to get to Gaborone. With approximately 1 km away to the main A1 road and 9km from Ramotswa, it has easier access to nearby amenities such as schools, hospitals, guest houses, shopping malls and much more.

Plot size: 882sqm
Price: P750 000

Property Features

- Lounge
- Dining room
- Fitted Kitchen
- Bathroom
- 3 Bedrooms similarly built the same
- Fitted Wardrobes

Features

Interior

Bedrooms	3
Bathrooms	1
Kitchens	1
Recep. Rooms	2

Exterior

Pool	No
------	----